



# Smart Villages

## The role of LEADER

Paul Soto

ENRD Contact Point



#SmartVillages

LEADER RELOADED  
EVORA 27 September



European Network for  
Rural Development



# Smart Villages

Jobs

Basic services

Digital

Social

Challenges

Opportunities

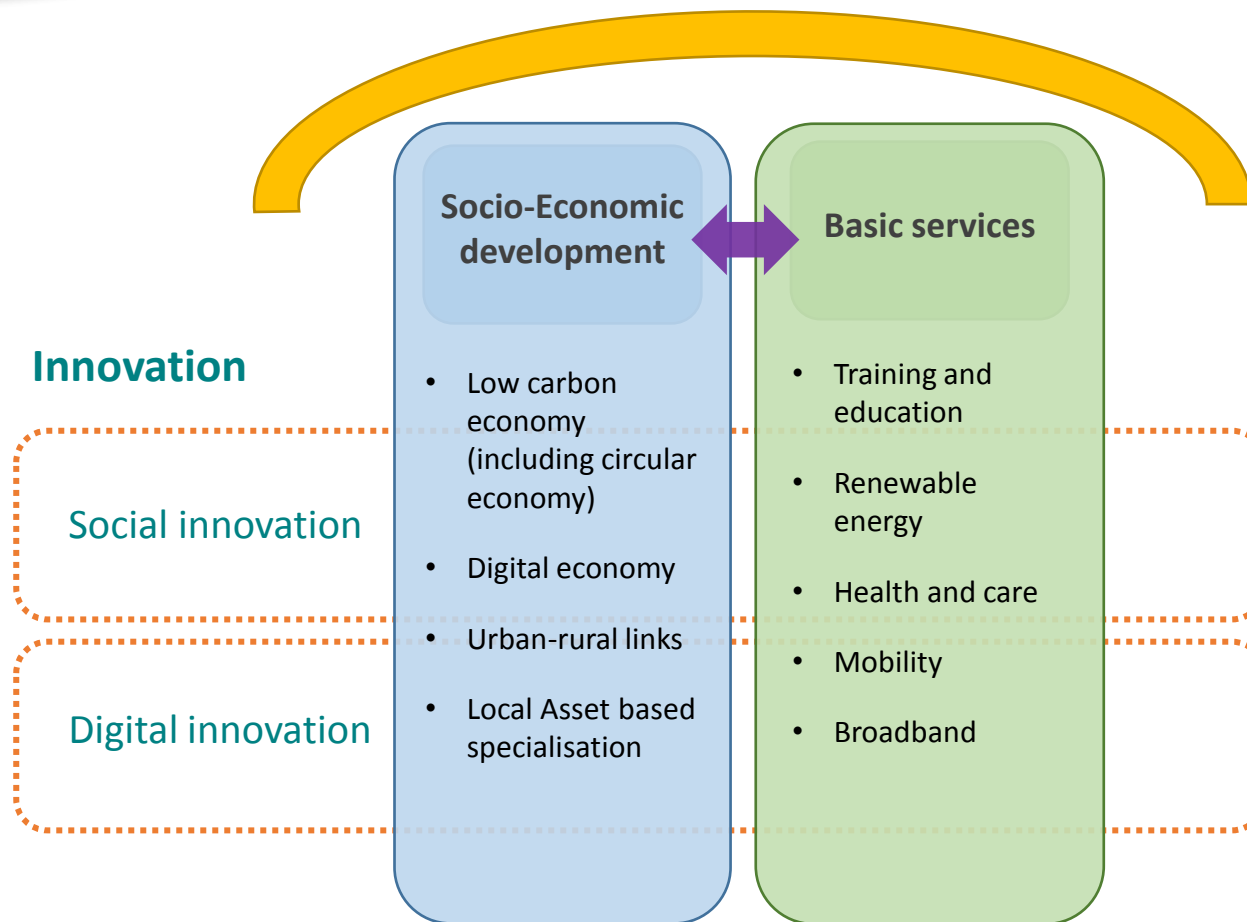
Villages

Cooperation and  
partnerships

People

Future vision

## Vision – our village/territory of the future



How to sustain it



European Network for  
Rural Development



# Community Hydro Scheme – Braemar

Financing	EUR
Local Sources (Council, Community Trust, National Park) - Feasibility	33 000
Community Energy Scotland (Repayable grant with interest if successful) – Preparatory period	117 000
Crowd funding	800 000
<b>Total</b>	<b>950 000</b>



European Network for  
Rural Development



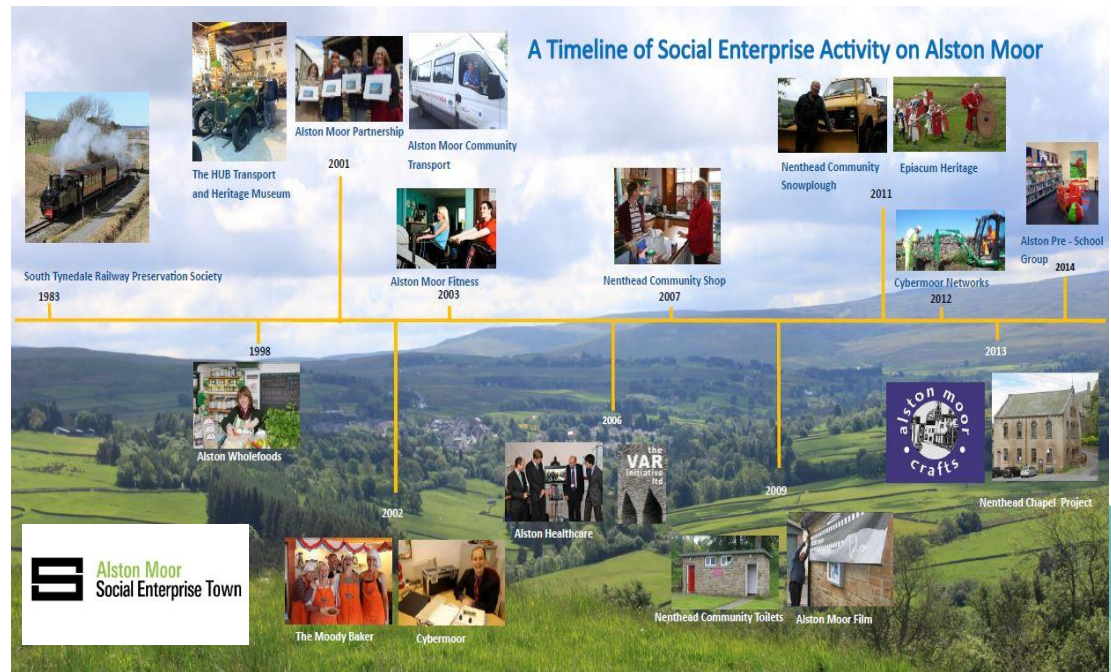
# Community Broadband – Molenwaard (NL)

Infrastructure	Length of network	Data speed	(Potential) subscribers
Fibre optic	158 km	100 Mbps	5345 potential subscribers (67% of the population of 14 villages involved)

Financing	EUR (Estimations)
Private investment & crowdfunding	2 200 000
loans and public funding	8 800 000
Total	11 000 000 (estimation)

# Alston Moor – The UK's First Social Enterprise Town

- Rural parish in Cumbria (pop. 2,100), nearest town-40min, limited public transport, reduction in services....
- 24 social enterprises: digital cooperative, retail, catering, tourism, social care, community transport, education, social care, health.....
- 50 jobs supported
- £2.2m turnover
- 200 volunteers



# Imagining and building future:

## Les villages du futur en Nivernais Morvan

Tentative de guide de « bonnes » pratiques  
pour les communes rurales

**1ers Constats:** La campagne attire à nouveau, demain sera différent d'hier, et surtout meilleur si nous savons nous prendre en main.

L'exode urbain a succédé à l'exode rural.

Depuis plusieurs années, le solde migratoire des territoires ruraux est positif.

Même s'il y a encore plus de décès que de naissances, certaines communes regagnent des habitants.

Ce mouvement net et nouveau doit être soutenu et accompagné (par l'Etat, la Région, le Département et l'intercommunalité).

Pour cela, les propositions concrètes du bouclier rural, et de l'appel pour des nouvelles ruralités, sont sur la table.

Elles ont d'ores et déjà permis des avancées concrètes et sont une référence pour construire une vraie politique publique de la ruralité.



- Jobs
- Youth
- Housing
- Health
- Education
- Mobility
- Connectivity
- Culture
- And many more

# CLLD and Smart Villages



CLLD supports the creation of state of the art community owned broadband



CLLD supports the rolling out of a mobility app developed by a social enterprise to other rural areas in France



CLLD supports a social enterprise providing a training itinerary to support rural SMEs in their digital transformation



CLLD cooperation measure is used to build a regional network of co-working spaces across an entire region



# SUPPORT FOR « LIGHTHOUSE » PROJECTS

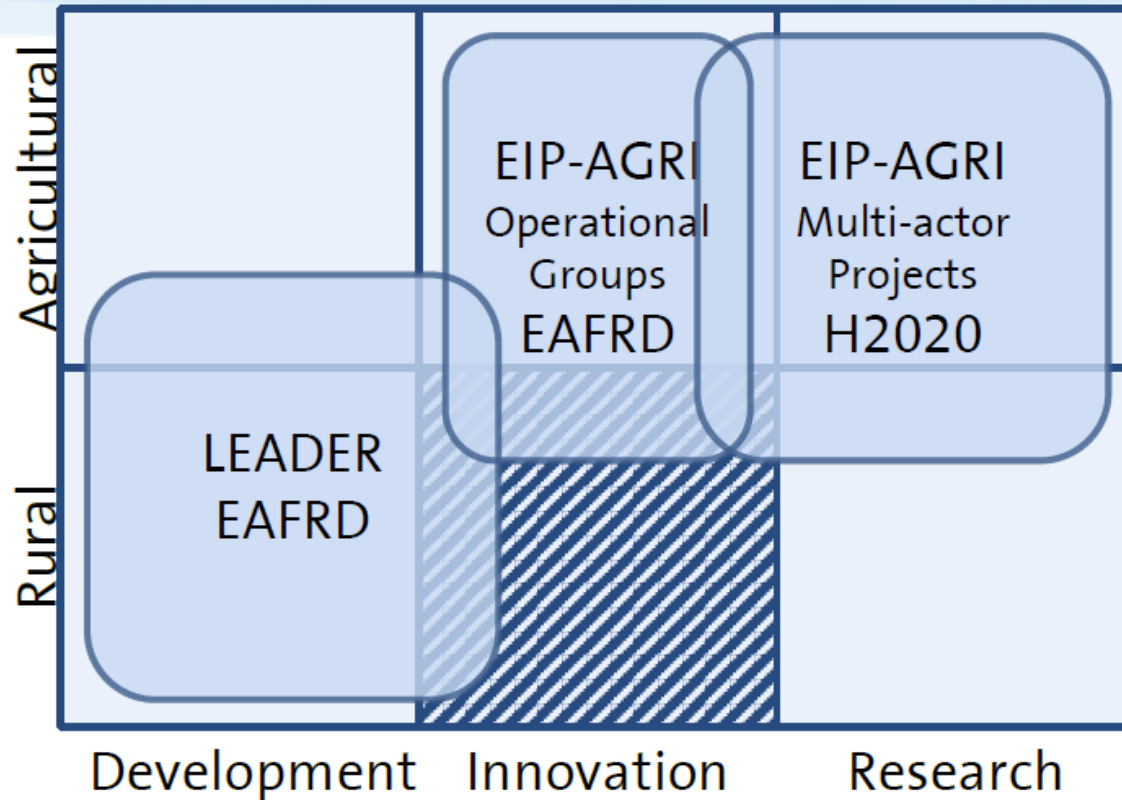
## SUSTAINABILITY –SCALE UP

LAG  
Animation



How to ensure that LEADER  
can mobilise these tools  
effectively for local  
communities?

# Opportunities for strengthening instruments for rural Innovation

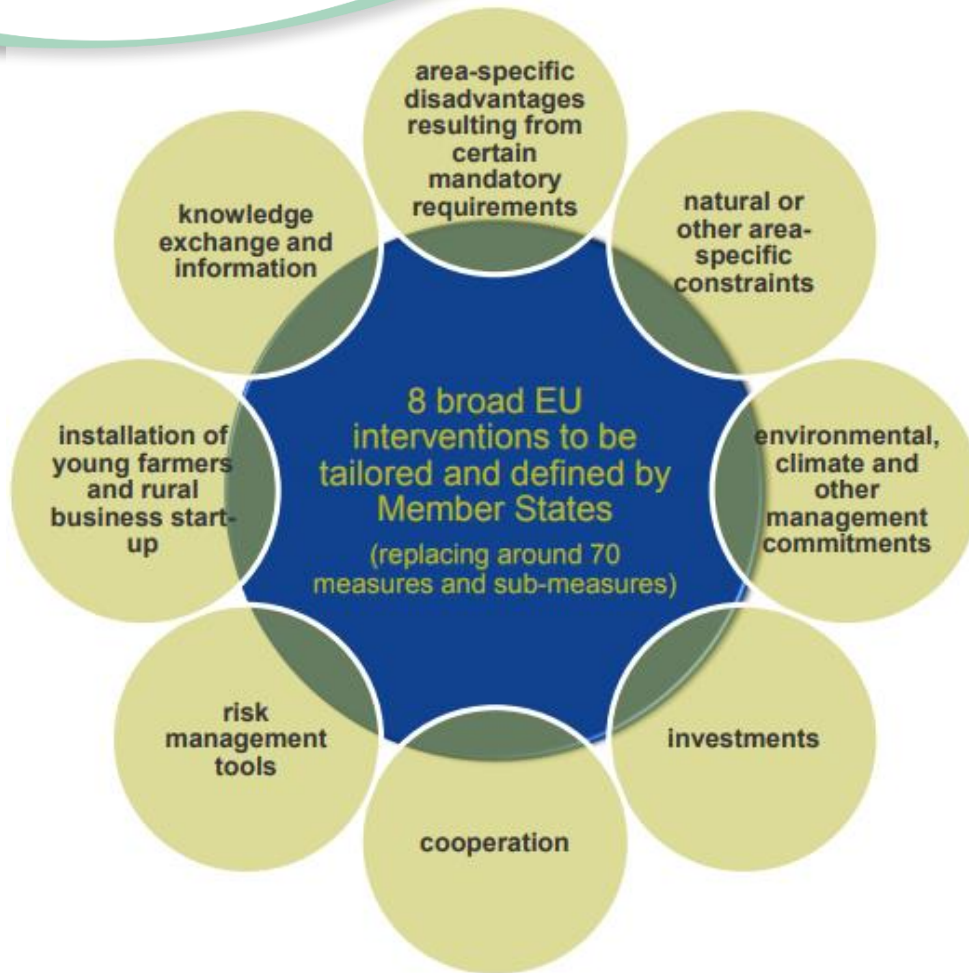


Lighthouse  
Projects

Omnibus – preparatory support, draft budgets, SCOs – can they be used for lighthouse projects which mobilise the local community?

Other forms of cooperation

# Future types of intervention



- SV results indicator
- Cooperation Interventions - 100% support rate + global projects for cooperation (incl. LEADER)
- How to avoid duplication and build on what exists?
- How to unleash the full potential of LEADER?



European Network for  
Rural Development

# THANK YOU VERY MUCH!

## Smart Villages Portal

European Commission - The European Network for Rural Development (ENRD) - Smart Villages Portal

myENRD Share

### Smart Villages Portal

This portal contains all the information collected by the ENRD Thematic Group (TG) on Smart Villages. It provides links to the many inspiring networks and initiatives across Europe that are exploring new ways of **revitalising rural services through social and digital innovation** in areas such as health, social services, education, energy, mobility, and others.

**Smart Villages** are "rural areas and communities which build on their existing strengths and assets as well as on developing new opportunities", where "traditional and new networks and services are enhanced by means of digital, telecommunication technologies, innovations and the better use of knowledge".

EU Action for Smart Villages,  
European Commission

Click on the buttons below to explore relevant resources

EU POLICY INITIATIVES & STRATEGIC APPROACHES | EU NETWORKS, ORGANISATIONS & RESEARCH

PROJECTS & INITIATIVES | POLICY TOOLS

Thematic Group documents and meetings

The ENRD TG on Smart Villages involves over 100 stakeholders from a wide range of local projects, networks, research organisations and EU institutions directly concerned with different aspects of Smart Villages. It explores how rural services can be improved and made more sustainable through community-based actions and projects and/or the deployment of Information and Communication Technology (ICT) tools:

- > Leaflet
- > Scoping Paper and Work Plan (*working draft*)
- > 1st TG meeting (26 October 2017) - see meeting highlights
- > 2nd TG meeting (7 December 2017)
- > 3rd TG meeting (22 February 2018)

TOOLS

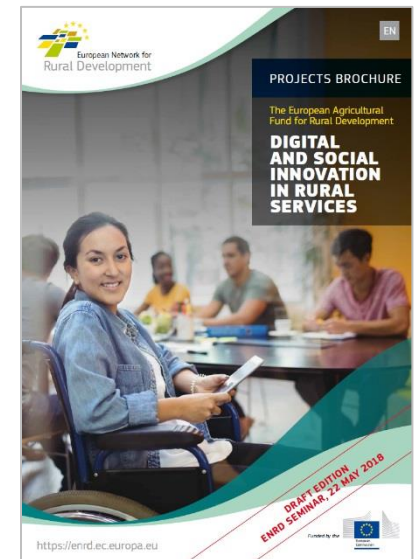
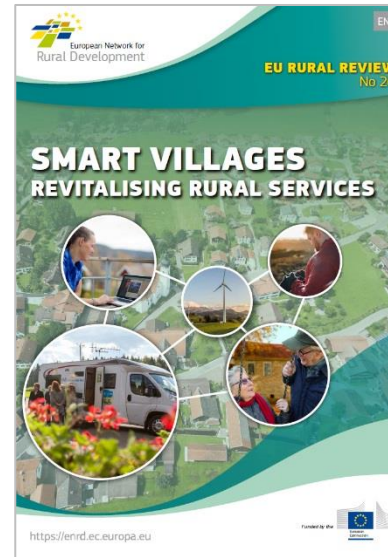
- myENRD
- Project Database
- LAG Database
- CLLD Partner Search
- NRN Toolkit

JOIN US

f t in y

Smart Villages Video

<https://youtu.be/ckB71hb0kx0>



[subscribe@enrd.eu](mailto:subscribe@enrd.eu)