

The background of the slide is a solid blue color. On the left and right sides, there are faint, light blue network diagrams consisting of interconnected lines and small colored dots (yellow, orange, red, white, and dark blue). In the upper right quadrant, there are several larger, solid-colored circles in shades of yellow, orange, red, and dark blue. The word "ECOLISE" is written in large, white, sans-serif capital letters in the upper center.

ECOLISE

• **EUROPEAN NETWORK**
FOR COMMUNITY-LED
INITIATIVES ON CLIMATE CHANGE
AND SUSTAINABILITY

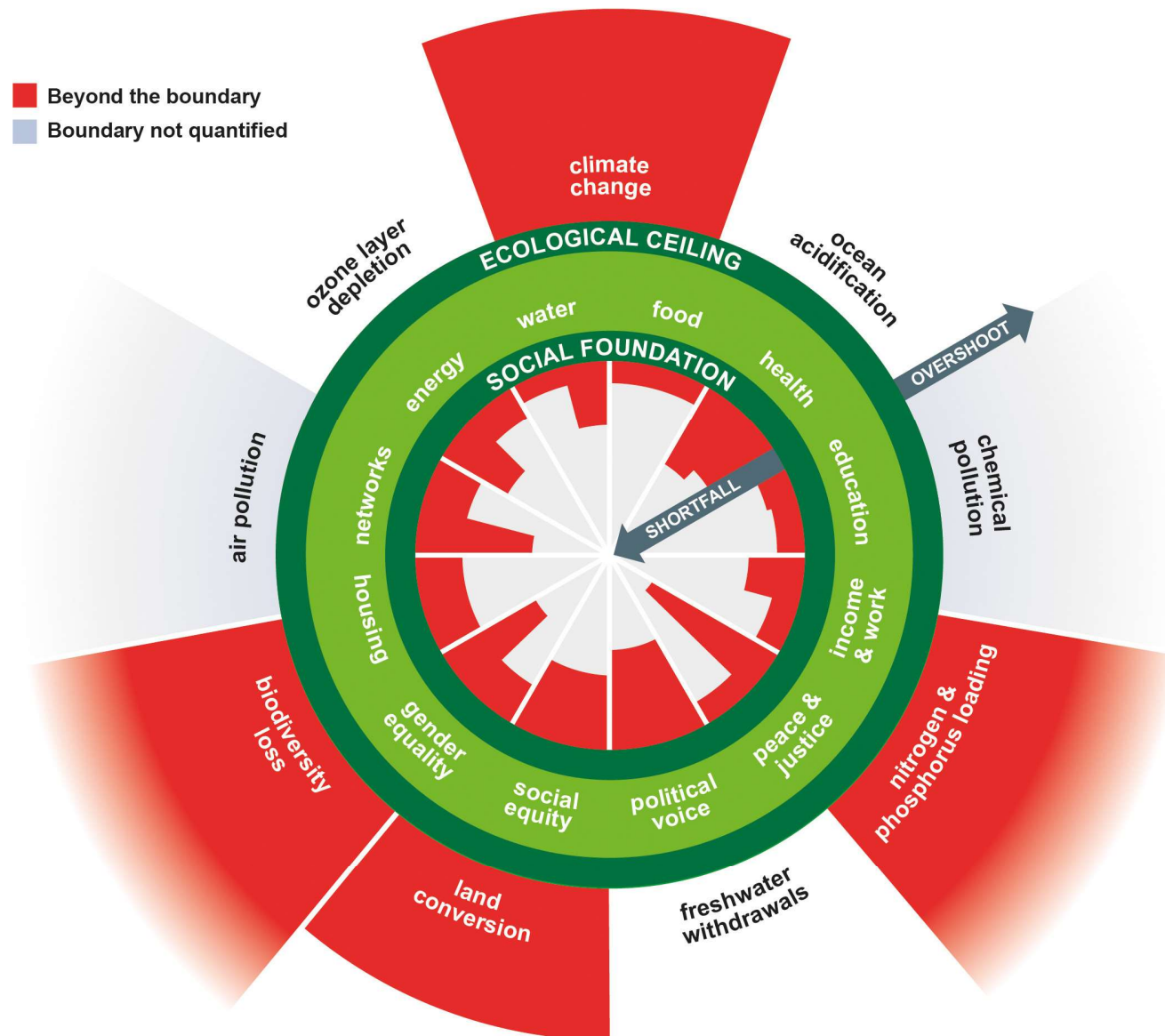
LEADER as a tool to respond to the climate crisis?

Eamon O'Hara, Executive Director, ECOLISE

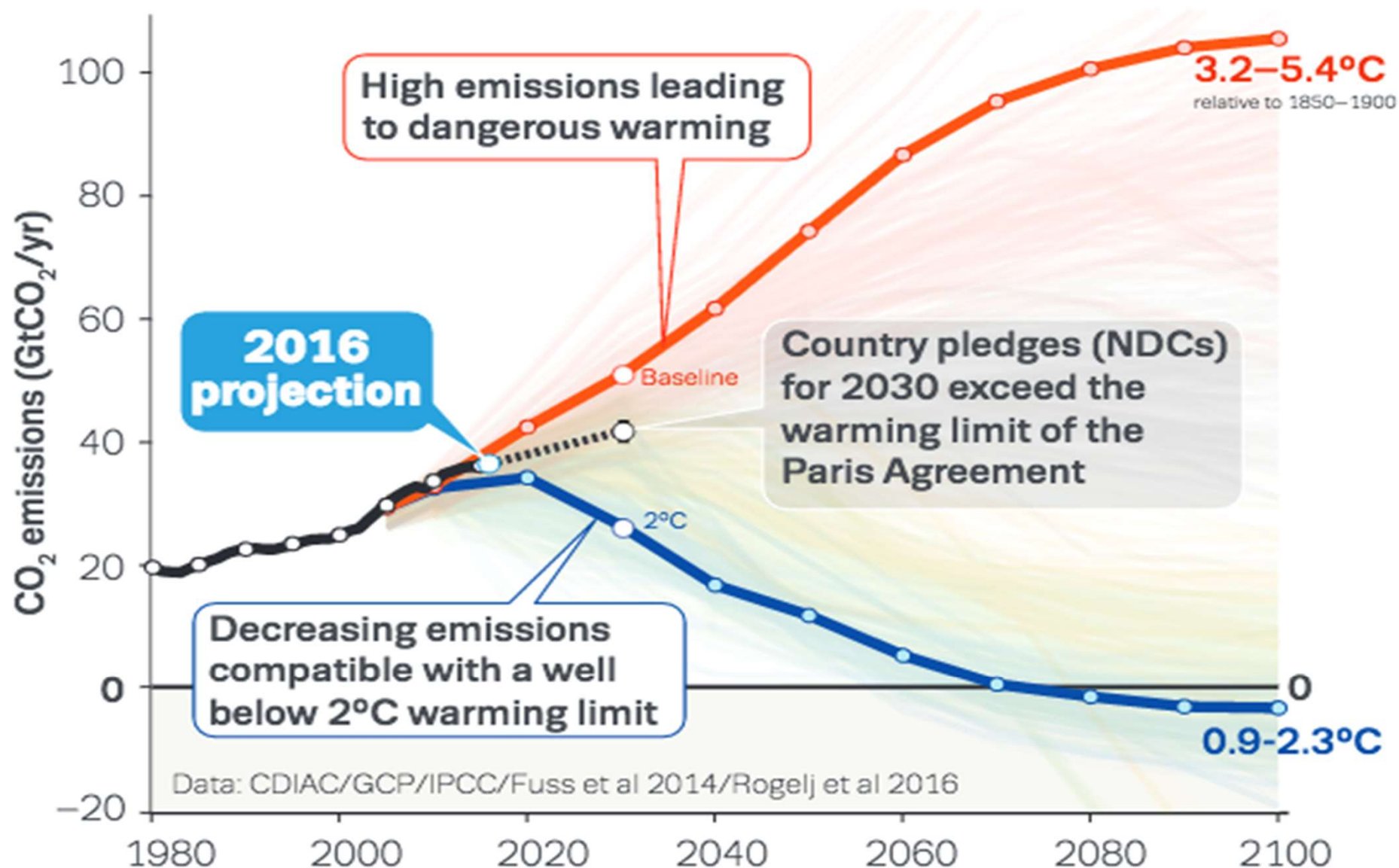
SEPTEMBER 2018

The challenges of our time

ECOLISE

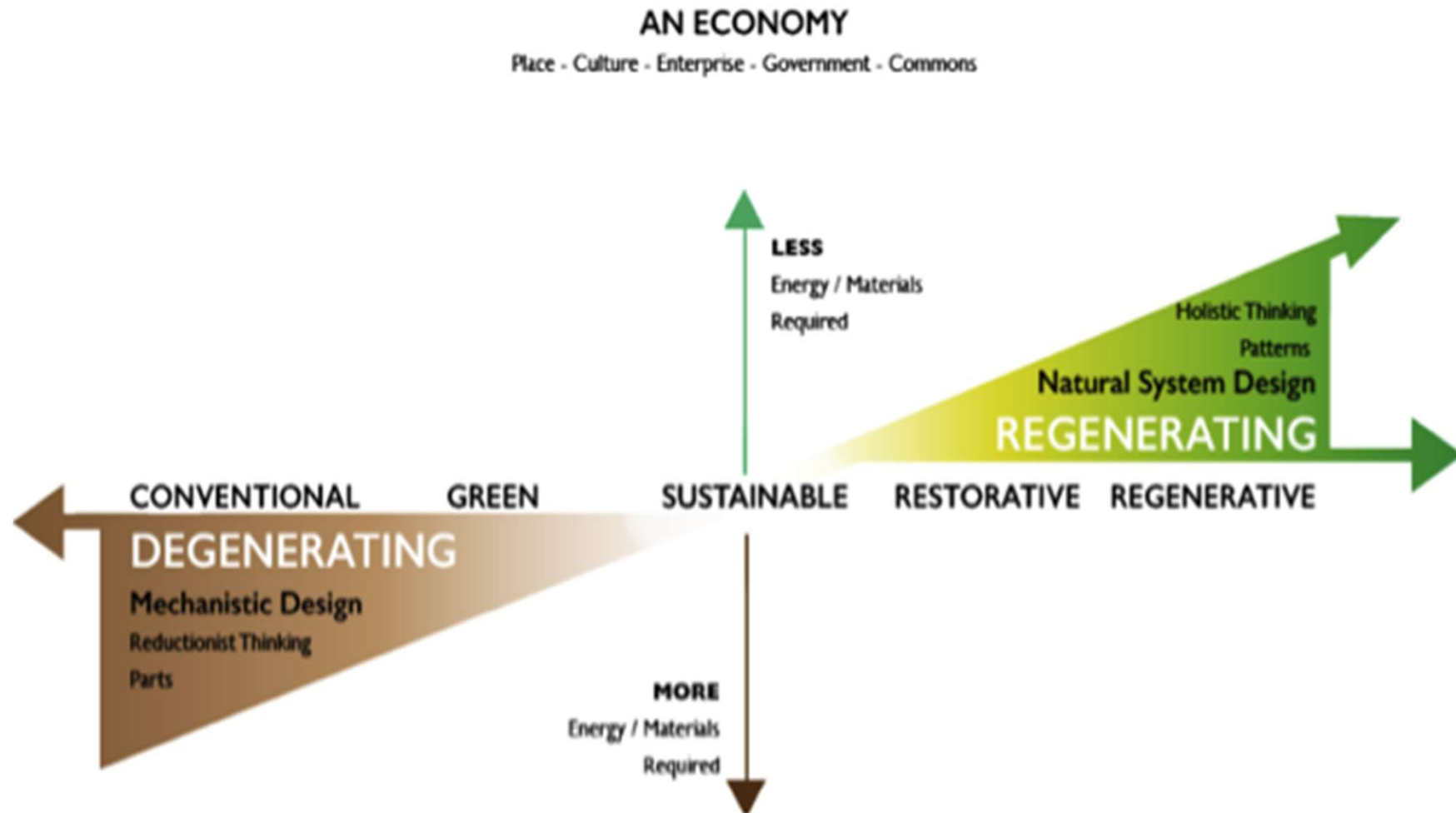






How do we respond?

ECOLISE



Vegetarian Eco-construction
Repair shops
Organic Biodegradable Reverse Social enterprise
Smart villages
Ecological economy Social innovation
Education Local currencies Community energy
Community supported agriculture
Slow food Ecovillages
Craft breweries
Community gardens

How do we amplify this response?

ECOLISE



LEADER/CLLD well placed to address critical gaps:

- **Leadership at local level**
- **Engage citizens and communities**
- **Empower and build capacity**
- **Connect communities and other stakeholders**
- **Channel funding, make it accessible**
- **Share lessons outwards and upwards**

EU level

- Enabling framework
- Shift 'success' metrics

Regional/National level

- Enabling framework
- Sustainable Communities Prog.

Local/LAG level

- Diversify partnerships
- 'Climate' at centre of local strategies
- Prioritise village/community transition plans and projects

- **Runaway climate change**
- **Urban-led.... urbanised future?**
- **Centralised, top-down..**

“Warnings are necessary. But fear will not get the job done. What captures my imagination is the vast opportunity afforded by climate action.”

UN Secretary-General, António Guterres



ECOLISE

- **EUROPEAN NETWORK**
FOR COMMUNITY-LED
INITIATIVES ON CLIMATE CHANGE
AND SUSTAINABILITY

Eamon O'Hara, Executive Director
Email: eamon.ohara@ecolise.eu

SEPTEMBER 2018