

26<sup>th</sup>–28<sup>th</sup>  
September  
2018



# LEADER RELOADED

The ELARD conference on the heartbeat of the LEADER community

Estonia

## From LEADER to CLLD in Estonia

○ National territory

● Covered territory by Rural LAGs



LEADER  
2007-2013  
26 LAGs  
86 M€

99,9%



LEADER  
2014-2020  
26 LAGs  
90 M€

99,9%

The LEADER programme in Estonia started in 2006. The budget of the Estonian Rural Development Plan 2007-2013 was 935 mln EUR, 10% of which was allocated for the LEADER measure. This equated to 86 mln EUR, which means that the annual support for the activities of Local action groups (LAGs) was more than 12.8 mln EUR on average. 7,186 projects were implemented through the LEADER measure, and 85,759,063 euros of the

LEADER budget was utilised, with only 0.9% unused. The LEADER budget in the Estonian Rural Development Plan 2014-2020 is 90 mln euros, meaning 10% of the RDP budget has been allocated for the LEADER measure.

80% of the LEADER measure budget is allocated for project support applicants (for implementation of the strategy) and a maximum of 20% goes towards

the administrative costs of local action groups support rate 100%.

The total number of inhabitants in LEADER areas is 504,363 and the area is 42,827 km<sup>2</sup>. The Estonian LAGs have more than 1,500 members (public sector 13%, entrepreneurs 37% and NGOs 37%). Each LAG has 60 members on average.

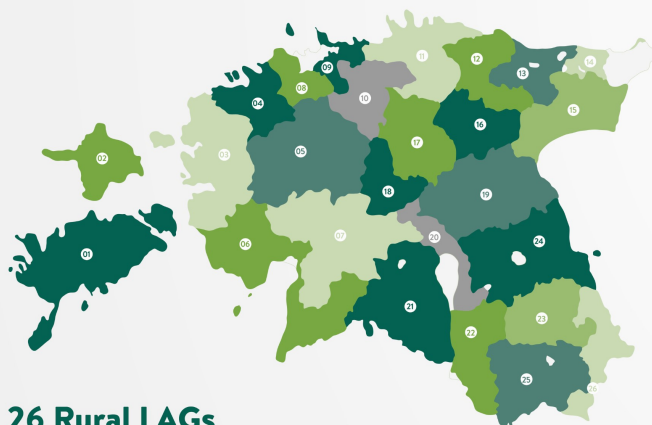
## LEADER/CLLD 2014–2020

### Local Action Groups (LAGs)

- ▶ 26 Rural LAGs
- ▶ 8 Fisheries LAGs
- ▶ 0 Urban LAGs

### Community Lead Local Development (CLLD) Budget

- ▶ LEADER budget under EAFRD – 90M€
- ▶ CLLD ERDF budget – 0M€
- ▶ CLLD ESF budget – 0M€
- ▶ CLLD EMFF budget – 26M€



## 26 Rural LAGs

- 01 WEST-ESTONIAN ISLANDS PARTNERSHIP
- 02 HIUMAA COOPERATION NETWORK
- 03 KODUKANT LÄÄNEMAA
- 04 WESTERN-HARJU PARTNERSHIP
- 05 RAPLAMAA PARTNERSHIP REGISTERED ASSOCIATION
- 06 PÄRNJU BAY PARTNERSHIP
- 07 GREEN RIVERLAND PARTNERSHIP
- 08 NELJA VALLA KOGU
- 09 NORTH-HARJU PARTNERSHIP
- 10 EAST-HARJU PARTNERSHIP
- 11 DEVELOPMENT CENTER
- 12 THE PARTNERS
- 13 VIRU REGION COOPERATION COUNCIL
- 14 PARTNERSHIP OF NORTH-EAST COAST
- 15 PEIPSİ-ALLIAGUSE CHAMBER OF COOPERATION
- 16 PANDIVERE DEVELOPMENT AND INCUBATION CENTER
- 17 JÄRVA DEVELOPMENT CENTER
- 18 SOUTH-JÄRVAMAA PARTNERSHIP
- 19 JÕGEVAMAA COOPERATION CHAMBER
- 20 VÕRTS-JÄRVE ASSOCIATION
- 21 MULGIMAA DEVELOPMENT
- 22 VALGA COUNTY PARTNERSHIPS BOARD
- 23 PÕLVAMAA PARTNERSHIP
- 24 TARTU DEVELOPMENT ASSOCIATION
- 25 VÕRUMAA PARTNERSHIP ASSEMBLY
- 26 BORDERLANDS LEADER

## Estonian Leader Union

Origins and history: the **Estonian LEADER Union** is a non-governmental organisation established to contribute to the implementation of LEADER/CLLD principles in Estonia. The purpose of the union is defined as threefold:

- to unite Estonian LEADER action groups (LAGs);
- to represent the interests of Estonian LAGs both within the country and internationally;
- to support the knowledge-based development of its member organisations.

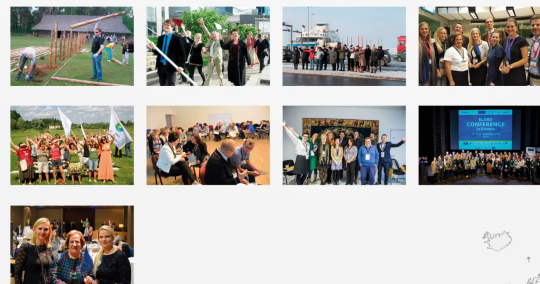
Our mission: the **Estonian LEADER Union** is a social partner in the legislative process, competent in nurturing its members and the guardian of LEADER principles in the development of rural areas.

Scope and range of activity: the **Estonian LEADER Union** was established on 19 March 2012. Currently, 20 Estonian LAGs are members of the Union. The Union has a board of 5 members, and one full time employee. Most of the activities are based on thematic working groups (e.g. communication, legislation, CLLD 2020+, membership, etc.) that bring together representatives from all member LAGs.

In 2016-2017, the **Estonian LEADER Union** held the presidency of ELARD and LAG Tartu County Development Association manager Kristiina Tammets became the first female president of ELARD.

In order to achieve its goals, the **Estonian LEADER Union**:

- represents members' common interests in national institutions, community groups and international organisations;
  - takes part in national and international discussions concerning rural areas;
  - represents members' interests as a social partner in drafting LEADER activity regulations;
  - supports members' cooperation and creates various cooperation opportunities;
  - organises training and networking activities for its members;
  - arranges legal aid and advises on legal issues;
  - takes part in various projects and cooperation networks that support international, national, regional or local levels.
- Estonian Leader Union** activities that have had a significant impact on policy making in LEADER:
- Monitoring committee under the Ministry of Agriculture assessing 2007-2013 RDP implementation and determining the National Rural Development Plan 2014-2020 and new LEADER regulation;
  - Working group of the Estonian Regional Development Strategy;
  - Representation at ELARD since 2011;
  - Representation at the European Rural Networks Assembly;
  - Initiator and leader of the CLLD multi-fund working group in Estonia involving all LEADER actors and partner associations.



Estonian Leader Union

+372 555 373 60 // info@leaderliit.eu  
<http://leaderliit.eu>



Portuguese Presidency 2018 – 2019

